

Network Assessment  
Client Risk Report  
**Design Data Corporation**

Prepared by:  
**Design Data Corporation**

CONFIDENTIALITY NOTE: The information contained in this report document is for the exclusive use of the client specified above and may contain confidential, privileged and non-disclosable information. If the recipient of this report is not the client or addressee, such recipient is strictly prohibited from reading, photocopying, distributing or otherwise using this report or its contents in any way.

## Discovery Tasks

The following discovery tasks were performed:

	TASK	DESCRIPTION
✓	Detect Domain Controllers	Identifies Domain Controllers and Online status.
✓	FSMO Role Analysis	Enumerates FSMO roles at the site.
✓	Enumerate Organization Units and Security Groups	Lists the Organizational units and Security Groups with members.
✓	User Analysis	List of users in AD, status, and last login/use. Helps identify potential security risks.
✓	Detect Local Mail Servers	Mail server(s) found on the network.
✓	Detect Time Servers	Time server(s) found on the network.
✓	Discover Network Shares	Comprehensive list of Network Shares by Server.
✓	Detect Major Applications	Major apps / versions and count of installations.
✓	Web Server Discovery and Identification	List of web servers and type.
✓	System by System Event Log Analysis	Last 5 System and App Event Log errors for servers.
✓	Detailed Domain Controller Event Log Analysis	List of event log entries from the past 24 hours for the Directory Service, DNS Server and File Replication Service event logs.
✓	Network Discovery for Non-A/D Devices	List of non AD devices responding to network requests.
✓	SQL Server Analysis	List of SQL Servers and associated database(s).
✓	Internet Domain Analysis	"Whois" check for company domain(s).
	Password Strength Analysis	Uses MBSA to identify computers with weak passwords that may pose a security risk.
	Missing Security Updates	Uses MBSA to identify computers missing security updates.
✓	Internet Access and Speed Test	Test of internet access and performance.
	External Security Vulnerabilities	List of Security Holes and Warnings from External Vulnerability Scan.

## Risk Score

The Risk Score is a value from 1 to 10, where 10 represents significant risk and potential issues.



There are significant issues in the network that should be addressed immediately. Multiple significant risk factors contribute to giving the high risk score. Review the summary issues on the following page and the full report for details.

## Issues Summary

---

This section contains summary of issues detected during the Network Assessment. It is based on general best practices and may indicate existing issues or points of interest.

### ***Inactive Users***

We discovered 17 active users that have not logged in within the past 30 days. These accounts most likely need to be disabled or removed if the users are no longer active. Active accounts that are not in use may pose a security risk and should be addressed with a User Audit.

### ***Inactive Computers***

We discovered a total of 43 computers of which only 20 have registered with the domain controller in the past 30 days. There are 23 computers entries that may no longer be relevant. While not inherently harmful, the defunct systems should be removed from Active Directory routinely.

### ***Organizational Units***

We discovered 5 populated Organizational Units. You should review the details of the Organization Units to ensure they align with your business and operational needs. Proper alignment is crucial to ensuring security and access policies are adhered to properly.

### ***Domain Controllers***

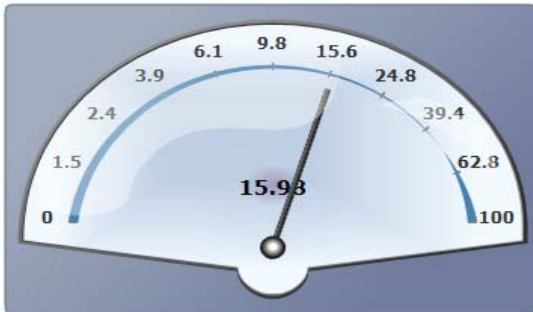
With only 1 online Domain Controller, there is a high risk of significant outage due to a lack of redundancy.

### ***Insecure Listening Ports***

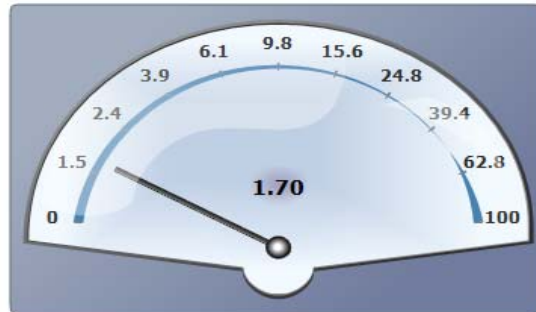
12 computers were detected as using potentially insecure protocols. There may be a legitimate need to use these protocols, but risks should be assessed to prevent unauthorized access.

## Internet Speed Test Results

Download Speed: **15.98 Mb/s**

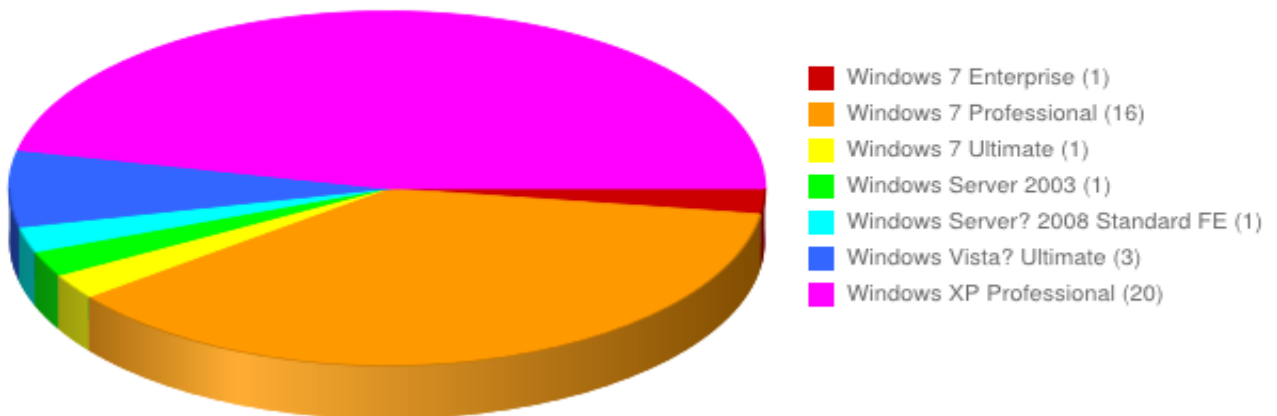


Upload Speed: **1.70 Mb/s**



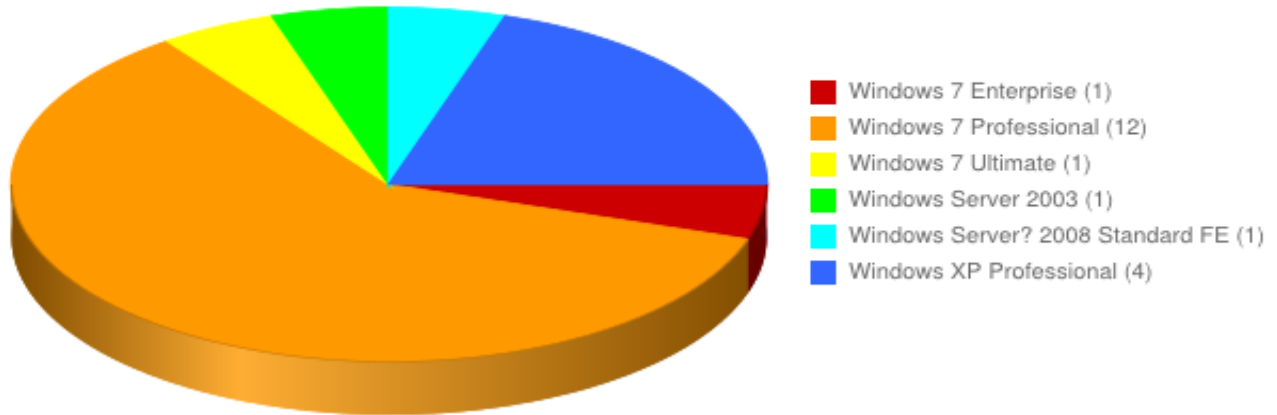
## Asset Summary

Total Computers by Operating System (43)

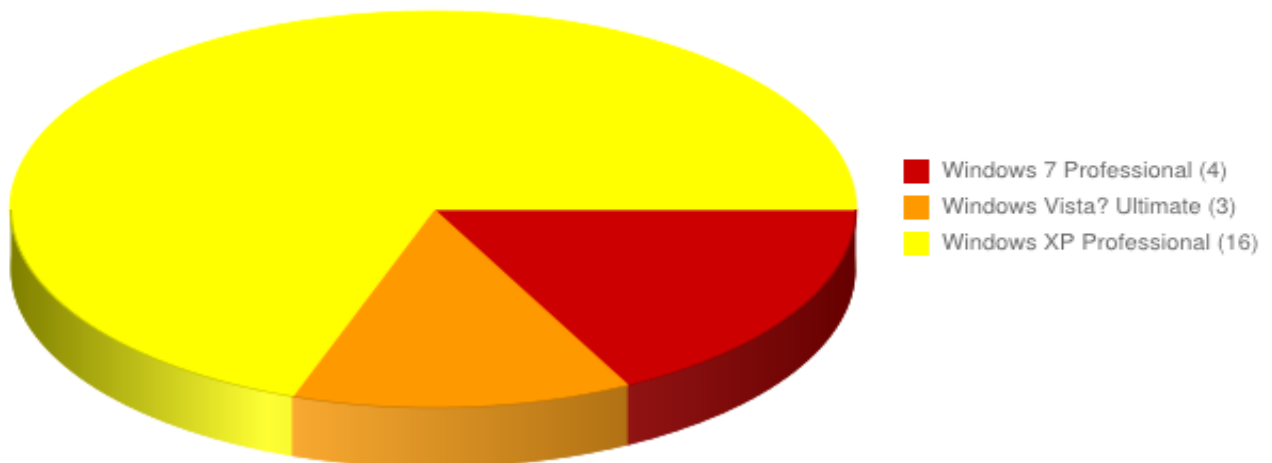


ASSESSMENT

Active Computers by Operating System (20)

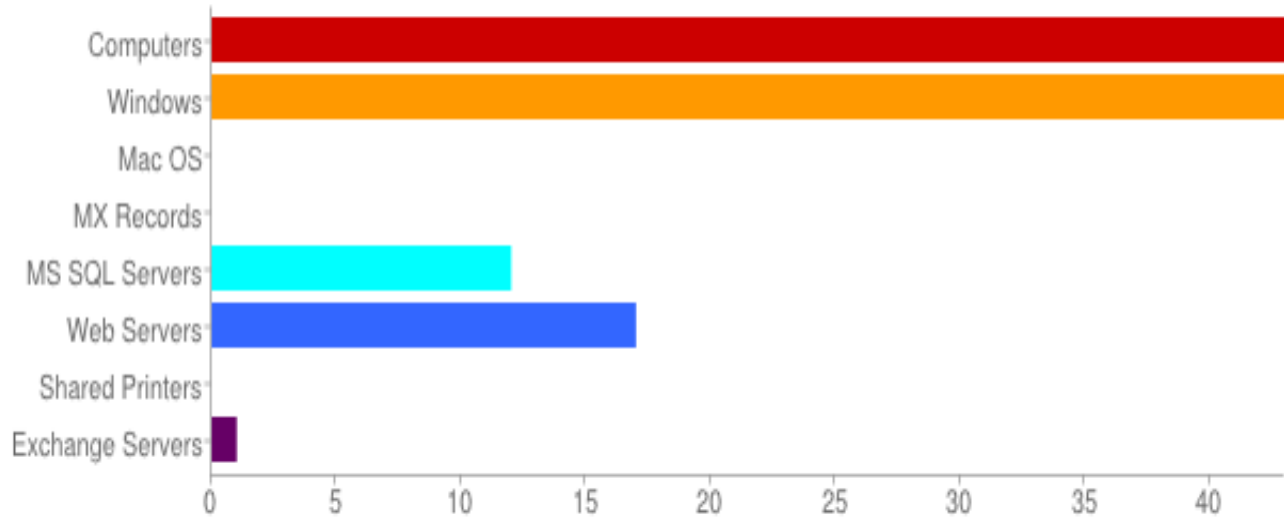


Inactive Computers by Operating System (23)

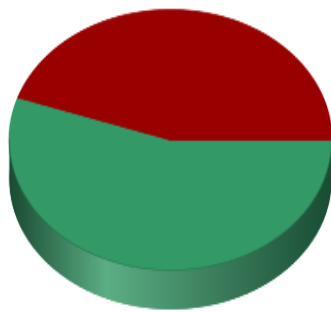


ASSESSMENT

Discovered Assets

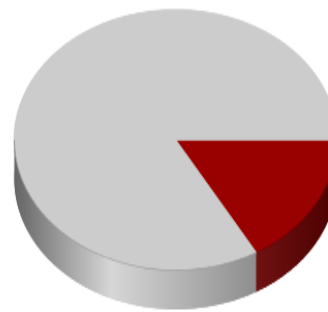


Enabled Users (38)



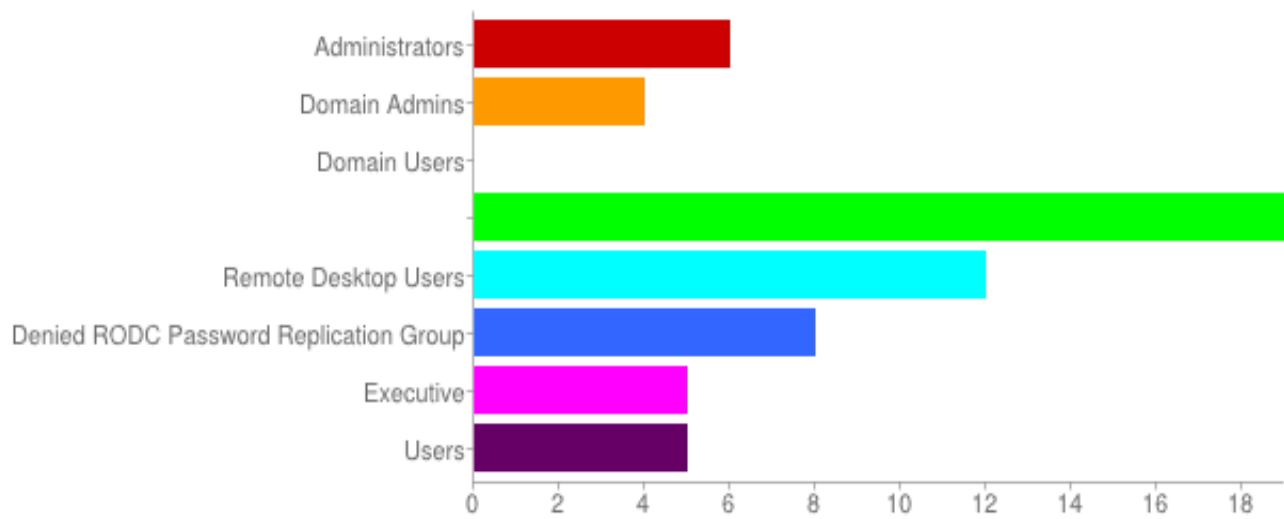
■ Last Login within 30 days (21)  
■ Last Login older than 30 days (17)

Disabled Users (6)

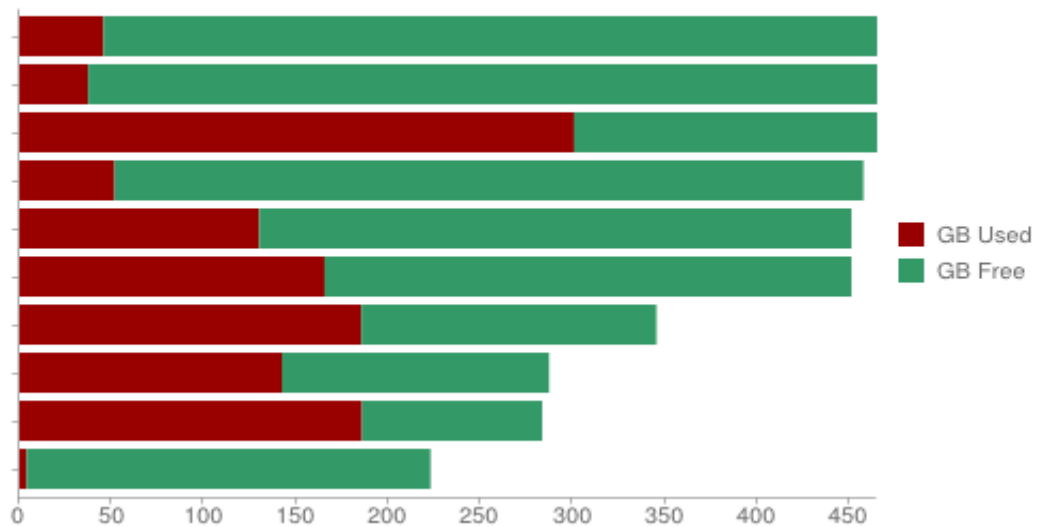


■ Last Login within 30 days (1)  
■ Last Login older than 30 days (5)

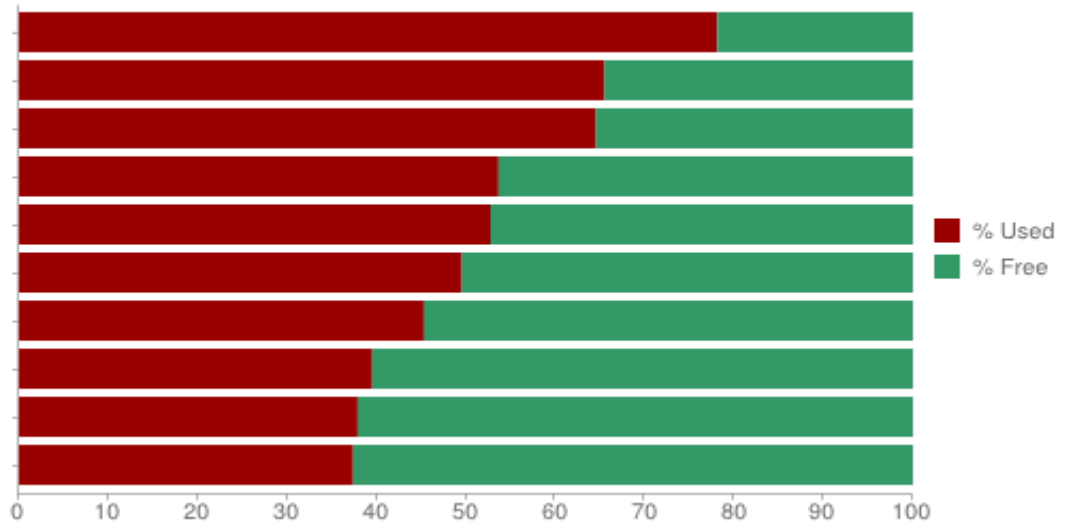
User Security Role Distribution (Admin and Top 5)



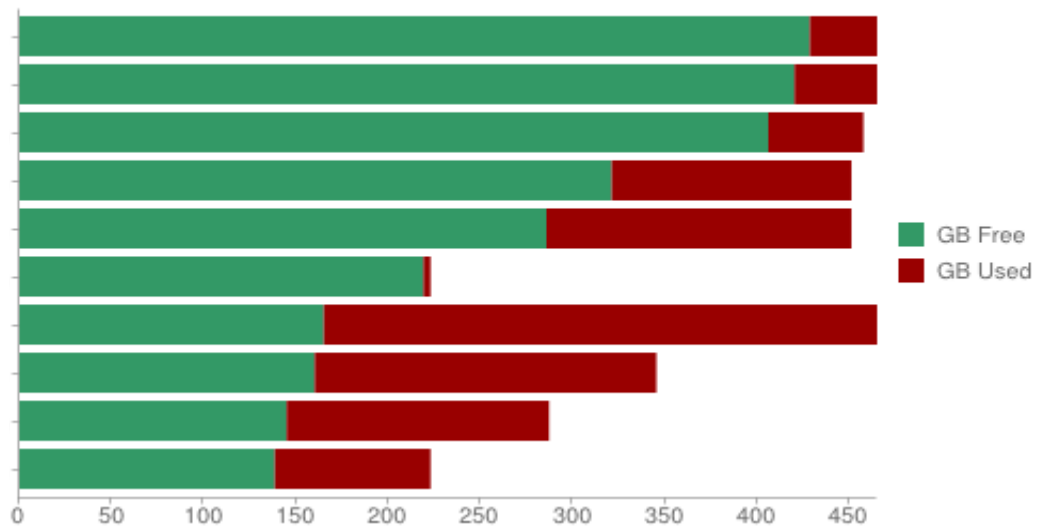
Top 10 Drive Capacity



Top 10 Drive % Used



Top 10 Drive Free Space





ASSESSMENT

This section contains a listing of the antivirus, antispyware, and firewall information as reported by Security Center, which is then categorized by domain membership. A cell with a green check indicates “yes”, a red X indicates “no”, and empty indicates that no information was reported by security center.

Computer Name	Antivirus			Antispyware			Windows Firewall		
	Name	On	Current	Name	On	Current	Domain	Private	Public
Comp1	Managed Antivirus Managed Antivirus	✓	✓	N/A					
Comp12	Managed Antivirus Managed Antivirus	✓	✓	Managed Antivirus Managed Antivirus Windows Defender	✓ ✓ ✗	✓ ✓ ✗			
Comp13	Managed Antivirus Managed Antivirus	✓	✓	Managed Antivirus Managed Antivirus Windows Defender	✓ ✓ ✗	✓ ✓ ✗			
Comp14	Managed Antivirus Managed Antivirus	✓	✓	Managed Antivirus Managed Antivirus Windows Defender	✓ ✓ ✗	✓ ✓ ✗			
Comp15	Managed Antivirus Managed Antivirus	✓	✓	Managed Antivirus Managed Antivirus Windows Defender	✓ ✓ ✗	✓ ✓ ✓			
Comp16	Managed Antivirus Managed Antivirus	✓	✓	Managed Antivirus Managed Antivirus Windows Defender	✓ ✓ ✗	✓ ✓ ✓			
Comp17	Managed Antivirus Managed Antivirus	✓	✓	N/A					
Comp18	N/A			N/A			✗	✓	✓
Comp19	Managed Antivirus Managed Antivirus	✓	✓	Managed Antivirus Managed Antivirus Windows Defender	✓ ✓ ✗	✓ ✓ ✓			
Comp11	Managed Antivirus Managed Antivirus	✓	✓	Managed Antivirus Managed Antivirus Windows Defender	✓ ✓ ✗	✓ ✓ ✓			
Comp21	Managed Antivirus Managed Antivirus	✓	✓	Managed Antivirus Managed Antivirus Windows Defender	✓ ✓ ✗	✓ ✓ ✗			
Comp22	Managed Antivirus Managed Antivirus	✓	✓	Managed Antivirus Managed Antivirus Spybot - Search & Destroy Windows Defender	✓ ✓ ✓ ✗ ✗	✓ ✓ ✗ ✗			
Comp23	Managed Antivirus Managed Antivirus	✓	✓	N/A			✓	✗	✗
Comp24	Managed Antivirus Managed Antivirus	✓	✓	Managed Antivirus Managed Antivirus Windows Defender	✓ ✓ ✗	✓ ✓ ✗			